

Sylvia Allanson Studio

Raising Funds for a New Performance Space

Introduction & Key Aims

In our 40th anniversary year we plan to improve the facilities the theatre has to offer by converting our existing mezzanine storage area into a new multi-purpose arts studio space, combining an intimate performing space, gallery and bar area.

Key Aims of the Project

- To create a fully accessible performance space.
- To provide an intimate and friendly atmosphere to encourage young performers.
- To be able to provide a performance space for all aspects of the performing arts.
- To create a multi-functional space that can be used for performance, art installations, meetings and refreshments.

Sylvia Allanson

Sylvia was the longest serving member of Pickering Musical Society, having first joined before the war as a junior dancer aged 7, and took her first principal role in the society's first post-war production in 1946, 'Tom Jones' back when the society performed in the town's Memorial Hall.

For all who knew her, Sylvia was born a natural entertainer. She was a completely natural and instinctive performer, and was even offered a place at the Windmill theatre in London.

Sylvia was a key member of the dance troupe in pantomimes and traditional spring time musicals. Her talents were recognised and she was sought after to take on principal parts.

Sylvia took on iconic parts in The Merry Widow, Calamity Jane, South Pacific and The Sound of Music.

After nearly forty wonderful years of shows performed at the Memorial Hall, in 1983 Pickering's own theatre was established and opened, and Sylvia continued her performing in the Kirk Theatre.

In later life Sylvia never lost touch with the musical society and the theatre, and was given Life Membership in recognition of her devotion to the society. Sylvia mentored, helped and advised many younger members over the years and even in later life was always interested in the shows being produced, the members performing and the success of the theatre.

With initial funding for the plans and development stages coming from generous donations from the funeral and concert for life member Sylvia Allanson, we have been able to launch this project, draw up the plans and gain planning permission for the development.



KIRK THEATRE
PICKERING

Sylvia Allanson Studio

Raising Funds for a New Performance Space

About the Kirk Theatre

The building was originally built and operated as a Methodist Chapel until the late 1970s. Forty years ago our operating company and resident theatre company Pickering Musical Society were looking for a new home, having previously performed in the town's memorial hall. The chapel was advertised for sale and the society purchased the building in 1979.

After many many late nights and weekends working, the small group of volunteers completed the conversion and in 1983 the chapel was transformed into the theatre.

After some discussion it was decided that the name would be The Kirk Theatre; for three reasons, the first being that the society's original rehearsal rooms were on Kirkham Lane in Pickering; the second being Kirk having connotations to religious buildings; and thirdly named after the society's founder member, Mrs Kirk (wife of Dr Kirk of the Kirk Collection, York Castle Museum).

It is a proud tradition that, not only being completely self-funded, all aspects of the theatre are run solely by passionate volunteers giving up their time to ensure the theatre keeps on going.

Over the years that followed, many other local and national organisations, charities and theatre companies have used the space to perform.

The Kirk Theatre is supported by many volunteers who contribute time and effort into the continual day to day running of the Theatre.



Kirk Theatre, Hungate, Pickering, North Yorkshire, YO18 7DL

2 of 9

www.kirktheatre.co.uk



KIRK THEATRE
PICKERING

Sylvia Allanson Studio

Raising Funds for a New Performance Space

Our Current Performing Space

Since 1983 the theatre has had one performance space; our 187 seat traditional Proscenium Arch theatre.

The auditorium is of traditional size and shape, with 11 rows of slightly raked seating. It is accessible via the front of the building, where the entrance is serviced by stone external steps. There is disabled access to the auditorium, served by an external ramp to the east side of the building.

The orchestra pit sits directly in front of the central bank of seating and is submerged half a meter below the auditorium level and accessed by steps from within the auditorium or backstage areas.

The Stage sits 1.2m above the auditorium floor level and is of traditional thrust design. Again serviced by a stair into the auditorium and two stairs from the backstage area.

Currently we have no access to the orchestra pit or stage areas for those with disabilities, prohibiting access to performance for some members of our local community.

The relatively large stage and expansive auditorium acts as a barrier to both younger and newly established performers, and the fixed traditional rowed seating can create a barrier to smaller and more intimate performances.



Kirk Theatre, Hungate, Pickering, North Yorkshire, YO18 7DL

3 of 9

www.kirktheatre.co.uk



KIRK THEATRE
PICKERING

Sylvia Allanson Studio

Raising Funds for a New Performance Space

Proposed New Performance Space

Pickering Musical Society is seeking funding to build and fit out a new proposed performance area.

The new studio space will be sited at the front of the building in what was the former chapel balcony seating area and is currently used as a mezzanine storage facility.

Although being on the first floor, the new space will be accessed by a new staircase and also a lift, giving access from the exterior ground level to both the current foyer / auditorium level and also to the new performance space.

The lift will be sited in the east tower (currently the box office). It is proposed that the box office will be relocated within the ground floor foyer to accommodate the tower lift.

The new studio will be all on one level, with the performing area accessible to those with disabilities.

The original stained glass windows will be opened up to create a stunning backdrop to the performance space and, in turn, showcase the heritage of this fantastic building.

The capacity of the new performance space will be 60; giving an intimate and friendly atmosphere. The seating will be individual chairs, allowing for a flexible space that can cater for many different events. The limited capacity will provide a useful positive space for new and younger performers making, in many cases their first public performance, an enjoyable experience.

The multi-functional space will allow us to showcase artists and performers from across the spectrum of the performing arts. Giving us not only a performance space for drama and music but also a gallery space, and a comfortable space for spoken word performances such as poetry, and prose readings.

Currently we do not have a meeting space within the theatre. The proposed new studio will also act as a meeting space for readings and recitals, whilst also providing a space for other performance and arts societies to meet and use the accessible performance space.

Finally, the multi-functional space will provide a refreshment area for use when the main theatre is in use. Our current bar and confectionary sales areas are small and prohibitive; the new space for 60 people will give the theatre audiences an area to consume their drinks and confectionary, rather than having to enjoy, as they currently do, within the auditorium.



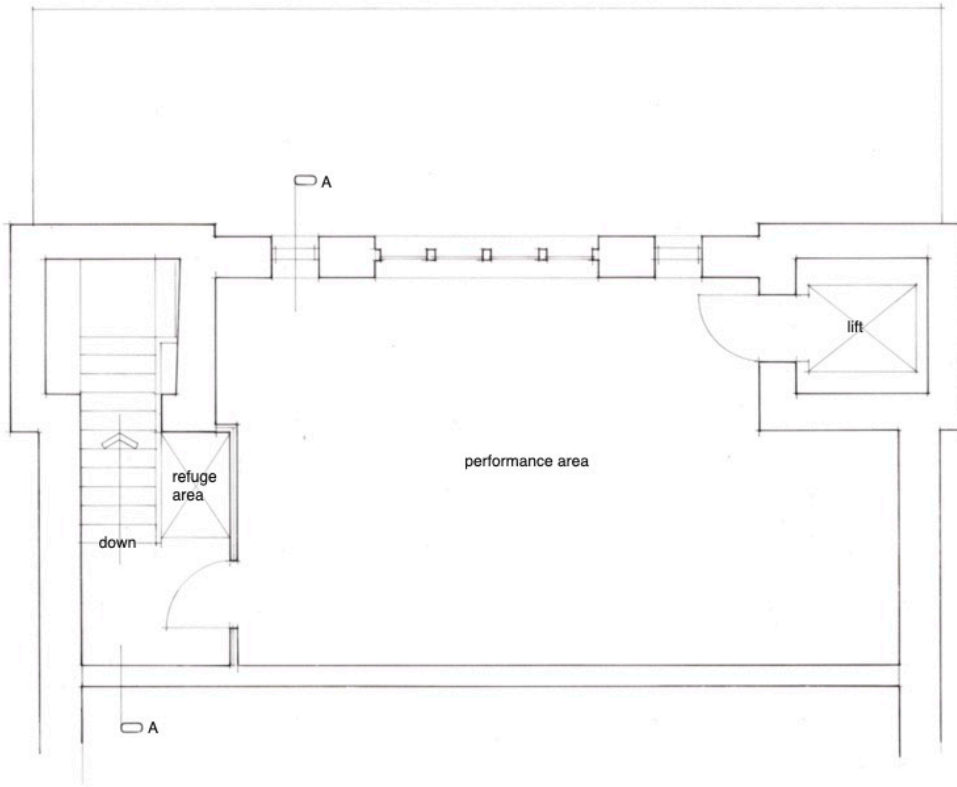
KIRK THEATRE
PICKERING

Sylvia Allanson Studio

Raising Funds for a New Performance Space

The Plans

CDM 2015
In accordance with CDM regulations 4, 9, and 11, any significant risks relating to the features shown on this drawing have been identified with .
 No significant risks have been identified.
 Significant risks have been identified, see notes on drawing.
refer to the current design risk register for further information.



PART FIRST FLOOR PLAN

PETER RAYMENT design

Architectural Designers • Peter Rayment • Richard Waller

title:	proposed first floor	dwg No:	2195-402	rev:	
project:	Kirk Theatre Pickering	scale:	1:50 @ A3		
client:	Kirk Theatre	date:	07 23		

Peter Rayment Design Ltd. Woodbine Cottage, Westgate, Thornton le Dale, Pickering YO18 7SG
01751 472541 | studio@peterraymentdesign.com | www.peterraymentdesign.com

Kirk Theatre, Hungate, Pickering, North Yorkshire, YO18 7DL

5 of 9

www.kirktheatre.co.uk

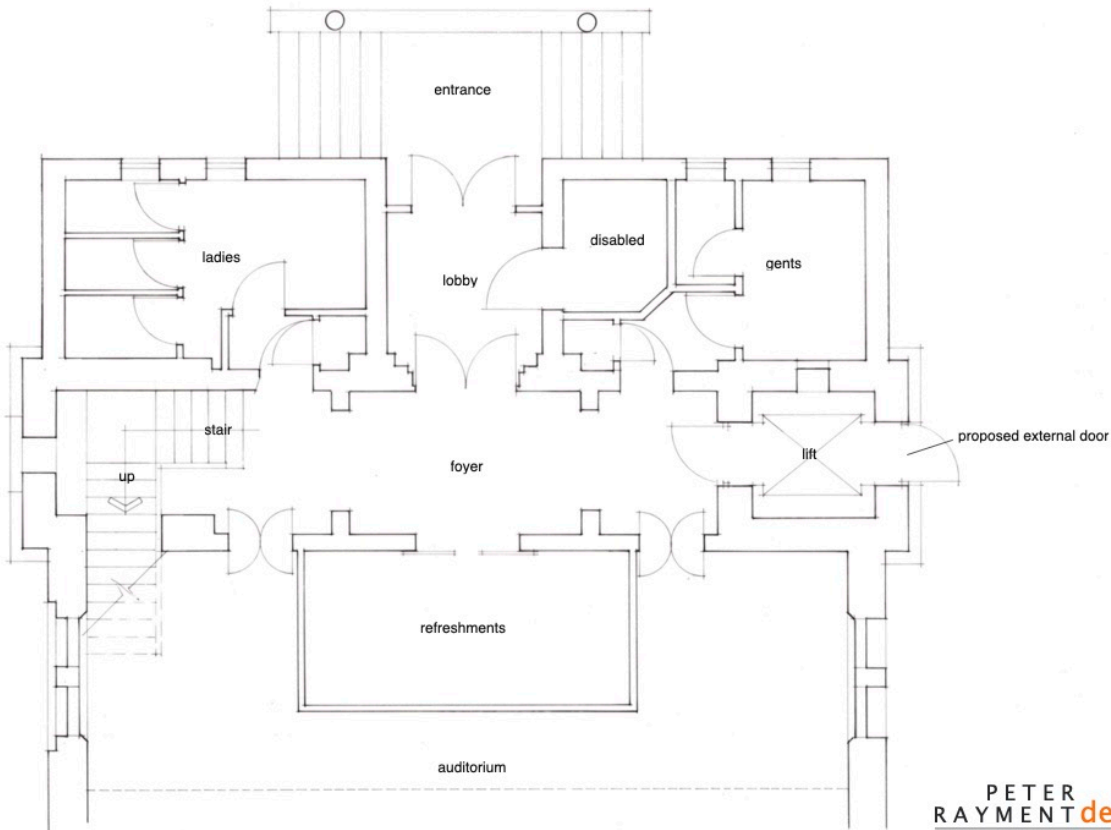


KIRK THEATRE
PICKERING

Sylvia Allanson Studio

Raising Funds for a New Performance Space

The Plans



PART GROUND FLOOR PLAN

CDM 2015
 In accordance with CDM regulations 8, 9, and 11, any significant risk relating to the design features shown on this drawing have been identified with .
 No significant risks have been identified, see notes on drawing.
 Significant risks have been identified, see notes on drawing.
 Refer to the current design risk register for further information.

PETER RAYMENT design
Architectural Designers • Peter Rayment • Richard Waller

title:	proposed ground floor	dwg No:	2195-401	rev:	
project:	Kirk Theatre Pickering	scale:	1:50 @ A3		
client:	Kirk Theatre	date:	07 23		

Peter Rayment Design Ltd. Woodbine Cottage, Westgate, Thornton le Dale, Pickering YO18 75G
01751 472541 | studio@peteraymentdesign.com | www.peteraymentdesign.com

Kirk Theatre, Hungate, Pickering, North Yorkshire, YO18 7DL

6 of 9

www.kirktheatre.co.uk

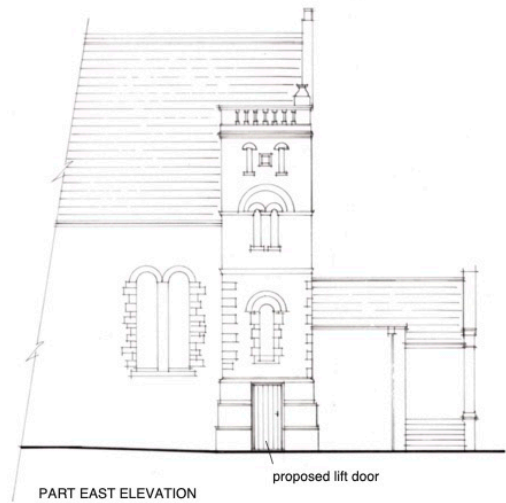
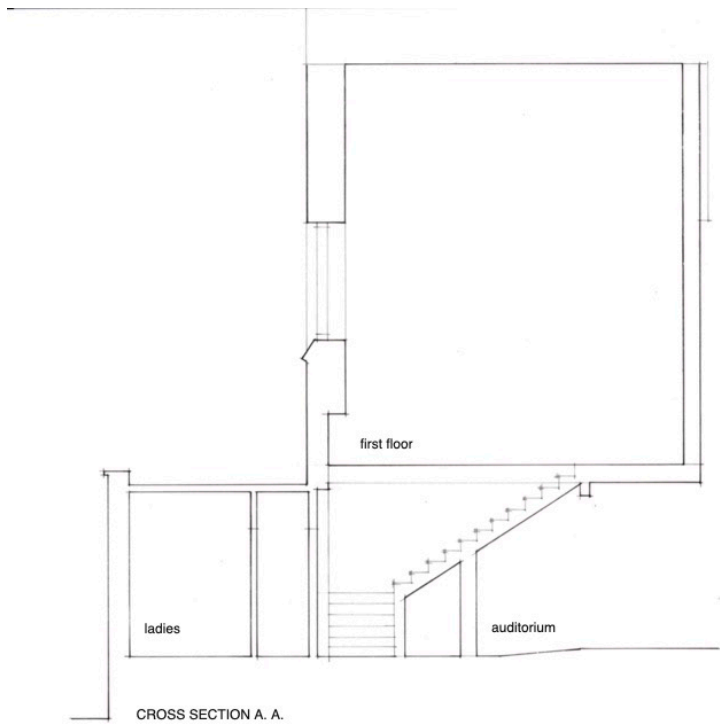


KIRK THEATRE
PICKERING

Sylvia Allanson Studio

Raising Funds for a New Performance Space

The Plans



CDM 2015
In accordance with CDM regulations 8, 9, and 11, any significant risks relating to the design features shown on this drawing have been identified with:
 the significant risks have been identified, see notes on drawings.
 Significant risks have been identified, see notes on drawings.
refer to the current design risk register for further information

PETER RAYMENT design
Architectural Designers • Peter Rayment • Richard Waller

title:	section and elevation	desig No:	2195-403	rev:	
project:	Kirk Theatre Pickering	scale:	1:50 & 1:100 @ A3		
client:	Kirk Theatre	date:	07 23		

Peter Rayment Design Ltd, Woodbine Cottage, Westgate, Thornton le Dale, Pickering YO18 7SG
01751 472541 | studio@peteraymentdesign.com | www.peteraymentdesign.com

Kirk Theatre, Hungate, Pickering, North Yorkshire, YO18 7DL

7 of 9

www.kirktheatre.co.uk



Sylvia Allanson Studio

Raising Funds for a New Performance Space

Financial Information

As previously stated, the Kirk Theatre is owned and operated by Pickering Musical Society, is completely run by volunteers and is self funded.

With initial funding for the plans and development stages coming from generous donations from the funeral and concert for life member Sylvia Allanson, we have been able to launch this project, draw up the plans and gain planning permission for the development.

We hope to fund the project through various funding initiatives, combined with donations from business, and charitable groups. We can't do this alone, and we need your support to help raise the £100,000 to complete this project.

Our fundraising arm, the 'Friends of Kirk Theatre' have launched the Sylvia Allanson Studio Fund, and they will be co-ordinating the grant applications, fund raising and direct donations.

If you would like to make a donation to this project, more information is on the next page.

We have decided to launch this project in our 40th anniversary year. With the help of the local community forty years ago, a small team of dedicated volunteers were able to create this fabulous community theatre for us all to enjoy.

We feel that with our current team and passionate supporters, we can rekindle that community spirit and help create this new performance space in order to begin the next chapter of the Kirk Theatre.



Sylvia Allanson Studio

Raising Funds for a New Performance Space

How to Support Us

There are many ways you can support us with this project; be it by making a financial donation to our fund, offering help and assistance with the fund raising, or by supporting the building of the project by helping to provide specific items of equipment or materials.

Making a Donation

Donations can be made via the homepage on our website; by clicking on the 'Make A Donation' tab.

Alternatively, you can make donations direct via Bank transfer to the Friends of Kirk Theatre; details below.

Barclays Bank Plc.
Friends of Kirk Theatre
Account No. 13699617
Sort Code. 20-99-56

Helping with Fundraising

If you would like more information or would like to volunteer or help the Friends with their fund raising, please get in touch with Co-Chair, Caroline Brown via email to friends@kirktheatre.co.uk

Supporting the Build

If you would like to help support the build aspect of the project, or you can help us with the procurement of materials and/or equipment, please get in touch with us at studio@kirktheatre.co.uk

For More Information

If you would like more information on any aspect of the project, please do not hesitate to get in touch with us via studio@kirktheatre.co.uk